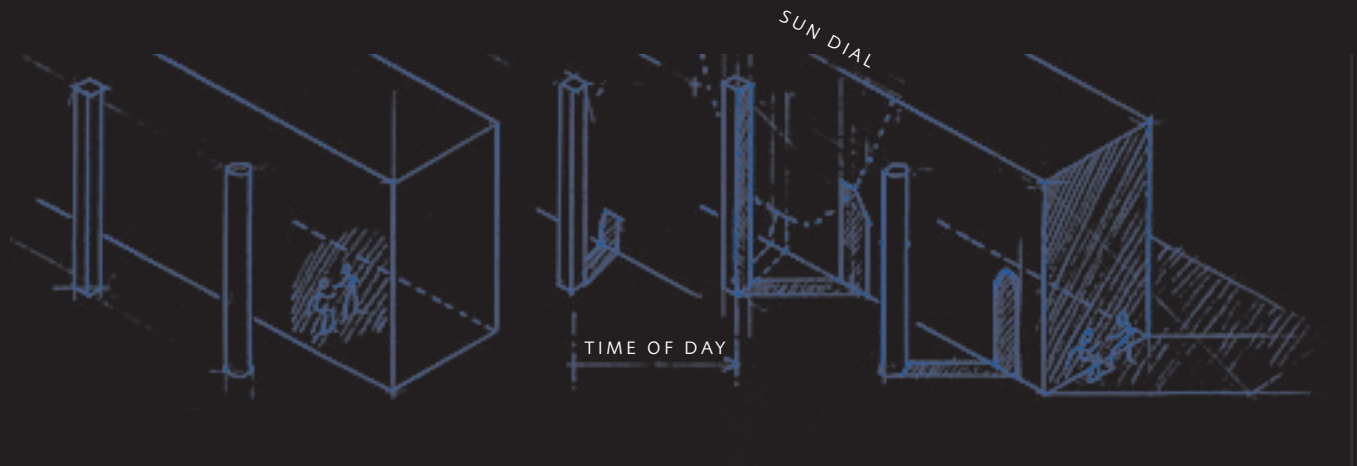


Serie (6):

Daylight architecture

Exterior spaces

Shadow and space



Light locus 1	↔	Light locus 2
two-dimensional	↔	three-dimensional
closed to the outside	↔	open to the outside
people inside the building between vertical surfaces	↔	people outside between vertical surface and shadow
interior	↔	exterior
day and night information only	↔	information about time of day and year

In part 5 of our series "Lighting design basics " we talked about daylight categories. Part 6 deals with daylight in exterior spaces. In the next issue, part 7 will focus on daylight in interior spaces.



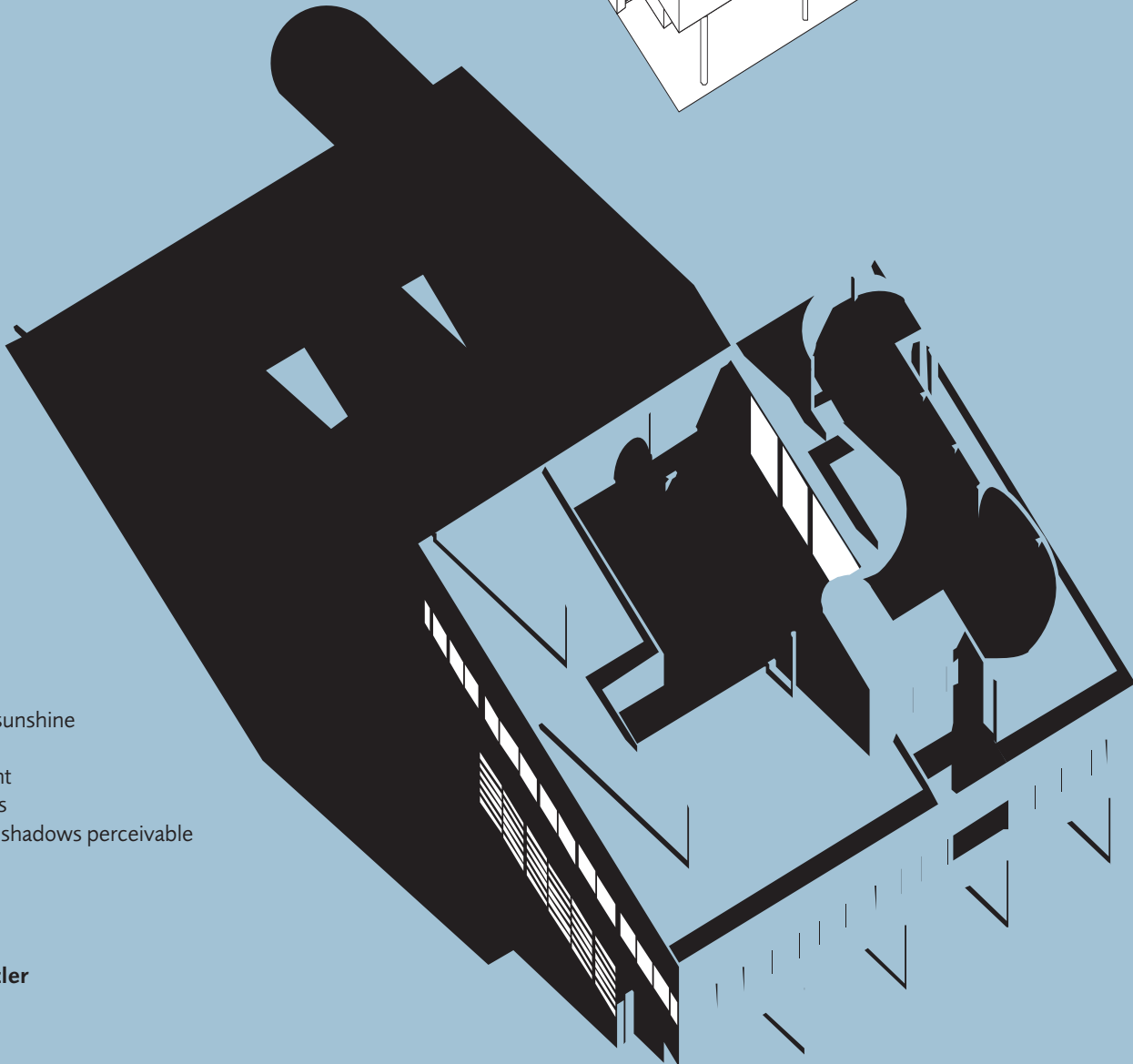
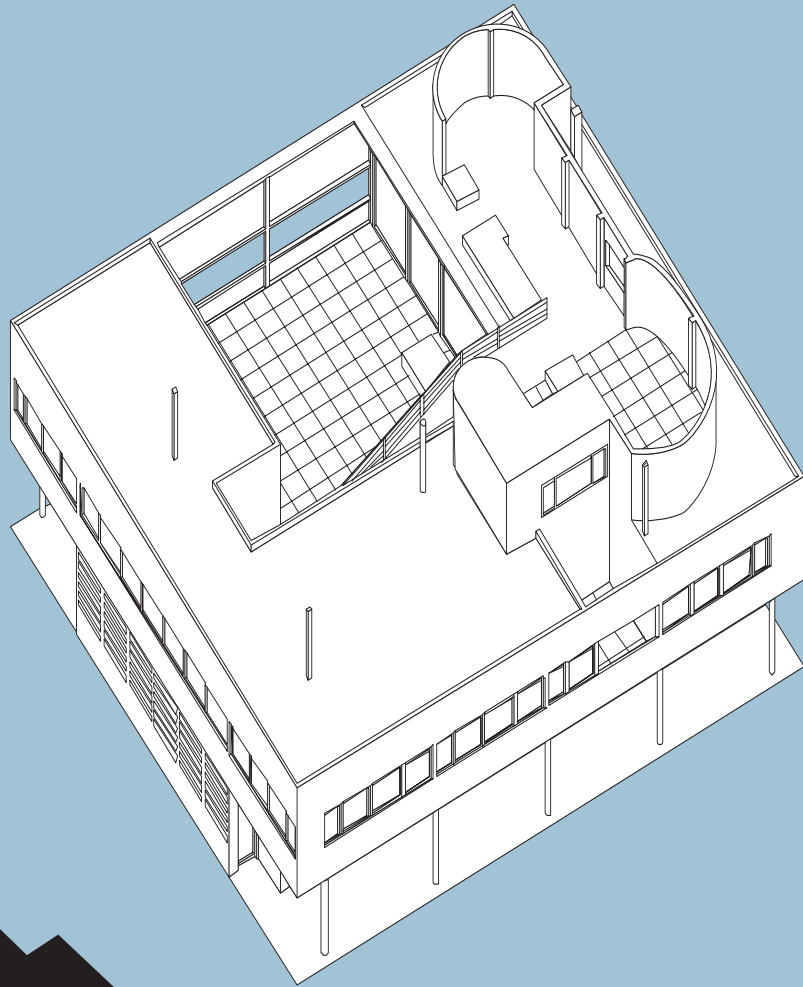
Series (6) Daylight architecture Exterior spaces

The building

Villa Savoye in Poissy near Paris was built in 1929-1931 by the architect Le Corbusier and is a classic example of the modern spirit of the Bauhaus era. The main features of this building are, stylistically speaking, the radical break with historicism and the ornamental, and architecturally speaking, the white floating cube effect. With respect to cultural history, it is a fine example of the realisation of the ideas behind the reform movement, which revolved around the words "light, sun and air": the ground floor is also referred to as the air floor, the top storey was designed for sun-bathing, and light can interact with columns, cubes, round forms and edges in the "correct play of masses" (to quote the architect).

Light locus 1

- Overcast sky, perhaps rainy
- Diffuse light
- Average brightness
- No shadows
- Practically only edges perceivable
- Positive form



Light locus 2

- Clear sky with sunshine
- Direct light
- Extremely bright
- Strong shadows
- Practically only shadows perceivable
- Negative form

Prof. Gero Canzler